



جمهورية مصر العربية  
وزارة التعليم العالي  
وكيل أول الوزارة

رئيس قطاع الشؤون الثقافية والبعثات

التاريخ: ٢٠١٢/٩/١٨

الموضوع: ترشيح أحد الخبراء من العلماء المصريين الذين لهم إسهامات في مجال البيئة للحصول علي جائزة Blue Plant Prize لعام ٢٠١٣.

السيد الأستاذ الدكتور / علي محمد فهمس الدين

رئيس جامعة بنها

تحية طيبة وبعد ...

أنشرف بإفادة سيادتكم بأنه قد ورد إلينا كتاب المكتب الثقافي المصري بطوكيو- اليابان يفيد رغبة مؤسسة أساهي اليابانية للزجاج لترشيح أحد الخبراء من العلماء المصريين الذين لهم إسهامات في مجال البيئة للحصول علي جائزة Blue Plant Prize لعام ٢٠١٣.

مرفق لسيادتكم شروط الترشيح للجائزة واستمارة التقدم، مع العلم بأن آخر موعد لاستلام استمارات الترشيح مستوفاة علي عنوان المكتب الثقافي بطوكيو [egyptcesb@tokyo.email.ne.jp](mailto:egyptcesb@tokyo.email.ne.jp) هو ٢٠١٢/١٠/١٥. ولمزيد من المعلومات يمكن الإطلاع علي الرابط التالي: <http://www.af-info.or.jp/en/index.html>

فبرجاء التكرم باتخاذ ما ترونه سيادتكم مناسباً في هذا الشأن.

وتفضلوا بقبول وافر الاحترام ...

وكيل أول الوزارة

رئيس قطاع الشؤون الثقافية والبعثات

هـ .

( أ . د . جلال الدين الجميحي )

تليفون : ٢٧٩٤٨٢١٠ ، فاكس : ٢٧٩٥٢٣٢٧

العنوان البريدي : ١٠١ شارع قصر العيني - الدور العاشر - مبنى أكاديمية البحث العلمي

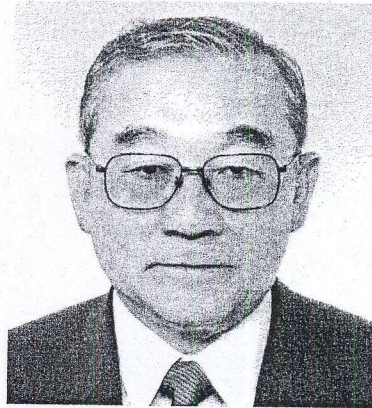
[www.mohe-casm.edu.eg](http://www.mohe-casm.edu.eg)

Email : [casm@imcu.sti.sci.eg](mailto:casm@imcu.sti.sci.eg)



Guidelines for Nomination

Blue  
Planet  
Prize  
2013



## Introduction

As part of nature, humankind inherited life and has been allowed to continue to exist through it. After the coming of civilization, there was an expansion of society and lifestyle in developed nations that consumed large amounts of energy, particularly after the Industrial Revolution. As a result, our global environment has been greatly affected by activities of the humankind. Global warming, deforestation, desertification, ocean acidification and a rise in temperature have led to the destruction of the ecosystem and the extinction of species. Now the global environment is in a very serious situation. Climate change issues, led by global warming, are closely linked to overpopulation, poverty, energy and many other issues and can endanger even the very foundation of existence of humankind.

The blue watery planet Earth has a unique environment for maintaining life through a complicated and exquisitely balanced ecosystem that includes animals, plants and microorganisms. Humankind has the very important mission of ensuring the sustainability of this irreplaceable Earth and passing it on to future generations. We must base our actions on the values and viewpoint of the global citizen, a position which transcends national borders and generations.

The Blue Planet Prize aims to be an international award for individuals and organizations that have made a great contribution to the efforts for solving global environment issues. The Prize was initiated in 1992 when the Earth Summit was held in Rio de Janeiro. The Asahi Glass Foundation expresses its heartfelt respect for the prize winners and hopes that their efforts will continue, with the wish that they address global environment issues from their respective standpoints and fields.

The name Blue Planet speaks for our wishes that the blue planet Earth will continue to exist as a treasure shared by all humankind. We strongly believe that humankind will solve the environmental problems that we face today, through intelligence and effort. I sincerely hope the Blue Planet Prize will help this come true.

July 2012  
Tetsuji Tanaka  
Chairman  
The Asahi Glass Foundation

## 2013 Blue Planet Prize Guidelines for Nomination of Candidates

### I. Target and Fields for Recognition

(1) **Target**

The prize recognizes outstanding achievement contributing to the solution of all aspects of global environmental problems as well as to the realization of conservation and restoration of the global environment and a sustainable society through significant contributions in observation, analysis, prediction, assessment, and remediation in the natural sciences, humanities and social sciences, and interdisciplinary fields.

(2) **Examples of the Fields for Recognition**

Categories relating to global environmental issues

*a. Building new paradigms*

Environmental philosophy, environmental ethics, environmental science, environmental engineering, environmental education, environmental law, environmental economics, environmental sociology

*b. Promoting better understanding of nature*

Observation, analysis, assessment and prediction relating to the study of earth's atmosphere, land, water, and all forms of life, as well as promotion of projects in these areas

*c. Creating better societies*

- Technology Development/Social Infrastructure

Development of core technologies/technological system for efficient use of energy and resources, reduction of burden on the environment, and appropriate land use/urban structure

- Social System Development

The design and practice of environmental law, environmental policy, environmental economics, and environmental management

- Communication

Mutual understanding between science and society, social/international consensus-building, environmental education, etc.

- Implementation and Application Programs

Public policy promotion, community programs

## II. Details of the Blue Planet Prize

People who have made achievements in the above areas are eligible for the Blue Planet Prize. As a general rule, two awards will be presented annually. Prize recipients will be presented with a certificate of merit, a commemorative trophy, and a supplementary award of 50 million yen.

## III. Candidacy Eligibility

- 1) Living citizens of all nations, irrespective of gender or religion, are eligible for the Blue Planet Prize.
- 2) The award is open to individuals, groups of individuals, and organizations. Groups will be nominated under the name of one of the group members.

\* As a general rule, individuals, groups, and organizations whose achievements have been attained through duties connected with governmental organizations (national and international) are not eligible for this award. However, this does not necessarily apply to achievements attained through duties at a public university or research institution.

## IV. Selection Criteria

The achievements of potential award winners must satisfy five requirements. Nominators are asked to confirm that these achievements

- 1) conform to the descriptions listed in the Target and Fields for Recognition ;
- 2) form a basis for harmonious coexistence of people, society, and the environment ;
- 3) contribute to humankind's pool of scientific knowledge as well as to realization of a global community that uses science and technology for the good of all ;
- 4) have great resonance or influence and make clear progress toward the conservation of the global environment ; and
- 5) are attained outside the scope of one's job responsibility or the organization to which the individual or group is affiliated, and to which the contribution of the individual or group is clear and obvious.

## V. Nomination Procedure

Nomination of candidates is made by completing the attached nomination form. Although this package may have been sent to you at your place of work, fill out the forms as an individual rather than as a representative of your organization. Nominators are expected to have a solid grasp of present international environmental concerns within their respective fields of study.

Nominators may submit up to four names. (If necessary, please make additional copies of the application forms in this package.) A nominator may not submit his or her own name for nomination.

Please fill out the forms completely, even in case you are renominating your candidate for previous years. However, applicants who wish to use nomination documents from the previous year that are held by the Foundation office should contact the office with those instructions.

# Winners of the 2012 Blue Planet Prize

## Introduction of the Recipients

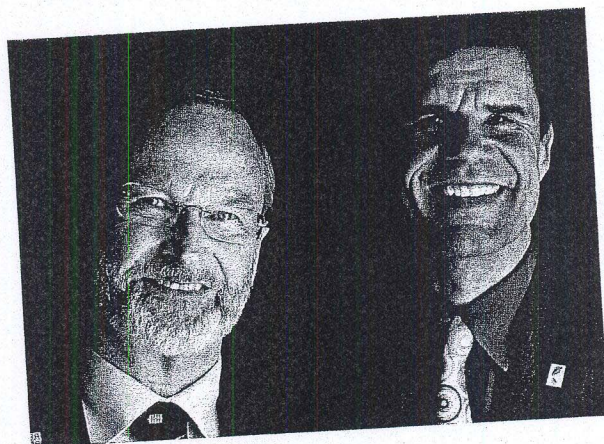
The Awards Ceremony is scheduled for October 31, 2012, in Tokyo.

### Professor William E. Rees (Canada)

Professor, University of British Columbia,  
FRSC (Royal Society of Canada)  
(Born December 18, 1943)

### Dr. Mathis Wackernagel (Switzerland)

President, Global Footprint Network  
(Born November 10, 1962)



Flying without a fuel gauge is dangerous. Yet most nations operate without knowing how much “nature” they have and how much they use. In developing Ecological Footprint accounting, William Rees and Mathis Wackernagel have provided a natural resource “fuel gauge” for nations and the world. Ecological Footprint calculations show that currently most countries are in ecological overshoot. It now takes our Blue Planet one year and 6 months to replenish what humanity uses each year. The Footprint is a unique metric that allows anyone to compare people's demand for biologically productive ecosystems with how much is available. The graphic power of the Footprint metaphor in many languages has helped make the Footprint the world's bestknown and most-used sustainability metric. The Footprint is backed up by detailed accounts that vividly underscore today's life-threatening sustainability gap, and suggest what we must do to close it.

### Dr. Thomas E. Lovejoy (USA)

Professor, Environmental Science and Policy,  
George Mason University  
(Born August 22, 1941)

Through pioneering and creative fieldwork conducted in the tropical Amazon rainforest, a great achievement of Dr. Lovejoy was shedding light on the fact and a major mechanism of species decline when the biodiversity concept was still in its infancy. Through this fieldwork, this nominee became the first person to academically clarify how human caused habitat fragmentation and propelled biodiversity toward crisis. Based on profound insights into ecosystems obtained through the series of research, Dr. Lovejoy became the first to publish the “a projection of species extinctions.” From there, he has continued to indicate and propose measures for curbing the rising rate of endangered species, significantly influenced numerous academic institutes and societies and helped lay the foundation for protecting the natural environment based on biodiversity, which is now a mainstream concept.



# Laureates

(Information on past Blue Planet Prize laureates corresponds to their titles and positions at the time the Prize was awarded)

1992

Dr. Syukuro Manabe  
(USA)

Member of the Senior Executive Service of the Geophysical Fluid Dynamics Laboratory at the National Oceanic and Atmospheric Administration

*Selection Rationale : Pioneering research for predicting climate change by numerical models and quantifying the effects of greenhouse gases*



International Institute for Environment and Development (IIED) (Founded in the UK)

*Selection Rationale : Pioneering scientific research and implementation activities for the realization of sustainable development in a wide range of fields, including agriculture, energy, and urban planning*

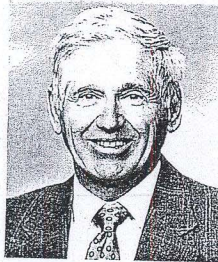


1993

Dr. Charles D. Keeling  
(USA) (1928-2005)

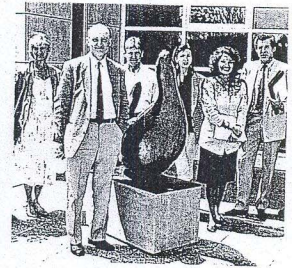
Professor, Scripps Institution of Oceanography at the University of California, San Diego

*Selection Rationale : Many years of research into atmospheric and oceanic carbon dioxide levels and their precise measurement and analysis, yielding a vast body of data on global warming*



IUCN-The World Conservation Union (Headquartered in Switzerland)

*Selection Rationale : Outstanding research and the application of scientific strategies to the conservation of natural resources and the promotion of biological diversity on an international scale*



1994

Prof. Dr. Eugen Seibold  
(Germany)

Professor Emeritus at the University of Kiel

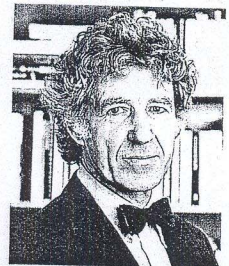
*Selection Rationale : Major contributions to the understanding of global environmental problems through research in the field of marine geology, including the analysis of ocean sediments, the study of the exchange of carbon dioxide between the oceans and the atmosphere, and predictions of regional desertification*



Mr. Lester R. Brown  
(USA)

Founder and President of the Worldwatch Institute

*Selection Rationale : Formulation of solutions to global environmental problems based on scientific analysis and contributions to international awareness of food shortages, sustainable energy resources, and the need for an "environmental revolution"*



1995

Dr. Bert Bolin  
(Sweden) (1925-2007)

Professor Emeritus at the University of Stockholm

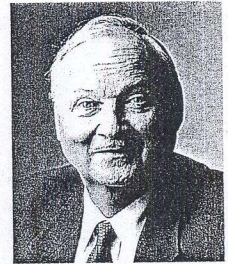
*Selection Rationale : Pioneering research into the carbon cycle, which affects the oceans, the atmosphere, and ecosystems, and major contributions to worldwide climate policy formation*



Mr. Maurice F. Strong  
(Canada)

Chairman of the Earth Council

*Selection Rationale : International leadership in conceptualizing sustainable development and forming global-scale implementation strategies based on findings of scientific research into environmental problems*



1996

Dr. Wallace S. Broecker  
(USA)

Newberry Professor of Geology at Columbia University

*Selection Rationale : The discovery of the global ocean current known as the "great conveyor belt" and other pioneering research into global ocean currents, ocean chemical cycles, especially the carbon cycle, and the ocean's influence on global climate changes*



M. S. Swaminathan  
Research Foundation  
(Founded in India)

*Selection Rationale : Leading the way toward the realization of sustainable agriculture and rural development through research into soil improvement and genetic engineering of plant species and the application of these findings*



1997

Dr. James E. Lovelock  
(UK)

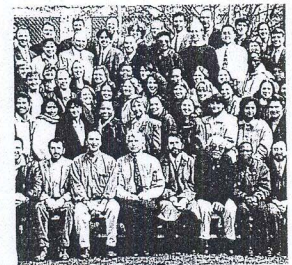
Honorary Visiting Fellow of Green College, Oxford University

*Selection Rationale : Pioneering the detection and measurement of trace substances in the atmosphere in addition to formulating the Gaia Hypothesis of earth science, which has helped stimulate interest in the environment*



Conservation International  
(Headquartered in Washington, D. C., USA)

*Selection Rationale : Protecting the Earth's biological diversity through research into ways to conserve ecosystems while improving the lives of local peoples*





1998

Prof. Mikhail I. Budyko  
(Russia) (1920-2001)

Head of the Division for Climate Change Research, State Hydrological Institute

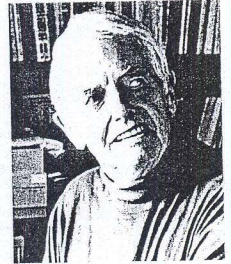
*Selection Rationale : Founding the field of physical climatology, the quantitative analysis of climate change, and making early predictions of global warming*



Mr. David R. Brower  
(USA) (1912-2000)

Chairman of the Earth Island Institute

*Selection Rationale : Pioneering in environmental activism, educating the general public about the science of environmental conservation and setting an important precedent for international environmental non-profit organizations*



1999

Dr. Paul R. Ehrlich  
(USA)

Director of the Center of Conservation Biology, Stanford University

*Selection Rationale : For co-founding the new science of conservation biology, for co-authoring the theory of co-evolution and for promoting environmental conservation by warning of a population explosion*



Prof. Qu Geping  
(China)

Chairman of the Environmental Protection and Resources Conservation Committee of the National People's Congress of China

*Selection Rationale : For establishing the legal framework for environmental protection in China based on scientific research and for his conservation efforts throughout that vast country*



2000

Dr. Theo Colborn  
(USA)

Senior Scientist and Director, Wildlife and Contamination Program, World Wildlife Fund

*Selection Rationale : For systematic research revealing the risk that "environmental hormones" pose to humans and wildlife and for warning about the threat of these synthetic chemicals*



Dr. Karl-Henrik Robert  
(Sweden)

Chairman of The Natural Step (NGO)

*Selection Rationale : For scientifically formulating the principles and theoretical framework required to establish a sustainable society and for enhancing the environmental awareness of businesses, municipalities and others*



---

2001

---

Lord (Robert) May of Oxford  
(Australia)

President of Royal Society of London

*Selection Rationale : For developing mathematical ecology, the means to predict changes in animal populations that serves as a fundamental tool for ecological conservation planning*



Dr. Norman Myers  
(UK)

Honorary Visiting Fellow of Green College, Oxford University

*Selection Rationale : For ongoing leadership in warning about new environmental problems, such as the mass extinction of species, and stating the criteria for a society that attaches importance to environmental conservation*



---

2002

---

Dr. Harold A. Mooney  
(USA)

Professor, Department of Biological Sciences, Stanford University

*Selection Rationale : For pioneering work in the field of plant physiological ecology, for providing objective measures of how plant ecologies are influenced by their environments, and for his conservation efforts*



Prof. J. Gustave Speth  
(USA)

Dean and Professor, School of Forestry and Environmental Studies, Yale University

*Selection Rationale : For a lifetime of creative and visionary leadership in the search for science-based solutions to global environmental problems and for pioneering efforts to bring these issues, including global climate change, to broad international attention*



---

2003

---

Dr. Gene E. Likens  
(USA)(left)

President and Director, Institute of Ecosystem Studies

Dr. F. Herbert Bormann  
(USA)

Oastler Professor of Ecosystem Ecology, Emeritus, Yale University

*Selection Rationale: For pioneering an approach that has become a model for the scientific world, and for the comprehensive understanding of ecosystems through long-term measurement of the flows of water and chemical substances in watersheds*



Dr. Vo Quy  
(Vietnam)

Professor, Center for Natural Resources Management and Environmental Studies, Vietnam National University, Hanoi

*Selection Rationale : For investigating the war-damaged forests of Vietnam and for your dedication to its restoration and conservation, as well as for the development of environmental laws and your contributions to the conservation of wildlife*



---

2004

---

Dr. Susan Solomon  
(USA)

Senior Scientist,  
Aeronomy Laboratory, National Oceanic  
and Atmospheric Administration

*Selection Rationale: For pioneering work  
in identifying the mechanism that produces  
the Antarctic ozone hole and momentous  
contributions towards the protection of the  
ozone layer*



Dr. Gro Harlem Brundtland  
(Norway)

Chairman WCED (World Commission  
on Environment and Development)  
Former Prime Minister of Norway  
Director-General Emeritus, WHO

*Selection Rationale: For putting forward  
globally the innovative concept of sus-  
tainable development, an idea that aims to  
balance environmental conservation with economic growth*



---

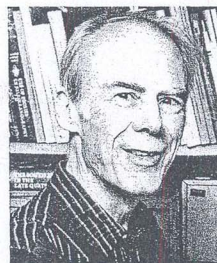
2005

---

Prof. Sir Nicholas Shackleton  
(UK) (1937-2006)

Emeritus Professor, Department of Earth  
Sciences, University of Cambridge  
Former Head of Godwin Laboratory for  
Quaternary Research

*Selection rationale: For contributions  
to palaeoclimatology, particularly in  
identifying the glacial - interglacial  
climatic cycles and identifying the role of carbon dioxide as well as  
changes in the Earth's orbit in causing them; this aids us in better  
predicting future climate change*



Dr. Gordon Hisashi Sato  
(USA)

Director Emeritus,  
W. Alton Jones Cell Science Center, Inc.  
Chairman of the Board,  
A&G Pharmaceutical, Inc.  
President, Manzanar Project Corporation

*Selection rationale: For developing a new  
mangrove planting technology in Eritrea  
and through its utilization thus showing the possibility of building a  
sustainable local community in the poorest area of the world*



---

2006

---

Dr. Akira Miyawaki  
(Japan)

Director, Japanese Center for International  
Studies in Ecology (JISE)  
Emeritus Professor, Yokohama National  
University

*Selection rationale: For establishing  
a theory to restore and to reconstruct  
forests based on the concept of "Potential  
natural vegetation" and by implementing the theory succeeded in  
reconstructing disaster-preventing environment-conserving forests and  
tropical forests, contributed in restoring the green on earth*



Dr. Emil Salim  
(Indonesia)

Professor, Faculty of Economics and  
Post Graduate Course, University of  
Indonesia  
Former Minister of Population and  
Environment, Republic of Indonesia

*Selection rationale: For contributing in  
establishing the concept of sustainable  
development and furthering global environmental policies through  
various United Nations' committees especially as the chairman of  
the Preparatory Committee for the World Summit on Sustainable  
Development*



---

2007

---

Professor Joseph L. Sax  
(USA)

Professor Emeritus, University of  
California, Berkeley

*Selection rationale: For drafting the world's first modern environmental law based on public trust doctrine supporting citizen action for protection of the environment, and for his pioneering contributions in development of the theory of environmental protection law and in establishing environmental laws internationally*



Dr. Amory B. Lovins  
(USA)

Chairman and Chief Scientist,  
Rocky Mountain Institute

*Selection rationale: For his contributions to leading global energy strategy for protection of the global environment by efficient utilization of energy through his advocacy of the concept of the "soft energy path" and invention of the Hypercar*



---

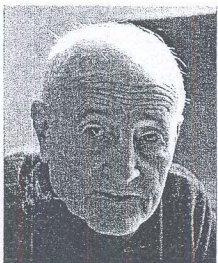
2008

---

Dr. Claude Lorius  
(France)

Director Emeritus of Research, CNRS  
Member of the French Academy of Sciences

*Selection rationale: For his contribution in disclosing past climate change based on polar ice sheet core analysis and in discovering the relation between climate change during glacial and interglacial periods and atmospheric concentrations of carbon dioxide, indicating its current unprecedentedly high level and warning a consequent global warming*



Professor José Goldemberg  
(Brazil)

Professor, Institute of Electrotechnics  
and Energy, University of São Paulo  
Former Rector, University of São Paulo

*Selection rationale: For making major contributions in formulating and implementing many policies associated with improvements on energy use and conservation, in devising a pioneering concept of "technological leapfrogging" for the developing countries for their sustainable development and in exhibiting strong leadership in preparation for the 1992 Rio Earth Summit*



---

2009

---

Professor Hirofumi Uzawa  
(Japan)

Member of The Japan Academy  
Professor Emeritus, The University of  
Tokyo

*Selection rationale: As a theoretical framework for confronting environmental issues such as global warming, he has advocated the concept of Social Common Capital, which contributed to pioneering and highly original achievements from a very early stage*



Lord(Nicholas)Stem of Brentford  
(UK)

Professor, The London School of Eco-  
nomics

*Selection rationale: For making major contributions in formulating and implementing many policies associated with improvements on energy use and conservation, in devising a pioneering concept of "technological leapfrogging" for the developing countries for their sustainable development and in exhibiting strong leadership in preparation for the 1992 Rio Earth Summit*



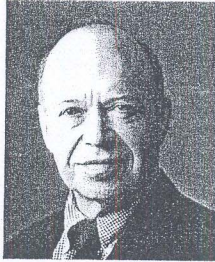
---

2010

---

**Dr. James Hansen**  
(USA)

Director at Goddard Institute for Space Studies ( NASA )  
Adjunct professor in the Department of Earth and Environmental Sciences at Columbia University



*Selection Rationale: Having predicted global warming in the early stage and warned that it would very probably cause destructive results for life on Earth, he called on the governments and the public to take immediate action to reduce and mitigate the impact of climate change*

**Dr. Robert Watson**  
(UK)

Chief Scientific Adviser of the UK Department for Environment, Food and Rural Affairs (DEFRA)  
Chair of Environmental Science and Science Director at Tyndall Centre for Climate Change Research, the University of East Anglia



*Selection Rationale: Having organized the famous scientific project to derive scientific evidence of the depletion of the Ozone Layer, he eventually endorsed the Montreal Protocol. Later as Chair of IPCC, he played a significant role in coordinating and bridging science and policy for protecting the world environment*

---

2011

---

**Dr. Jane Lubchenco**  
(USA)

Under Secretary of Commerce for Oceans and Atmosphere  
Administrator of the National Oceanic and Atmospheric Administration (NOAA)



*Selection rationale: For substantial contributions to the understanding of biodiversity and marine ecology and clear demonstration to the world of the importance of the social responsibility of scientists.*

**Barefoot College**  
(Founded in India)

*Selection rationale: For having supported rural villagers in underdeveloped nations and created a model for autonomous regional social development through unique educational programs that emphasize traditional ideas and self-respect.*



# The Asahi Glass Foundation

## Mission

The Asahi Glass Foundation strives to contribute to the creation of a society that can transmit the genuine wealth of human civilization by supporting advanced research in the fields of science and technology and by recognizing efforts to solve environmental issues that call for global solutions.

## Profile

The Asahi Glass Foundation is the oldest organization of its kind in Japan. Since its establishment, it has provided monetary assistance to applied chemistry departments at public and private universities and their affiliated research institutes. Recently, the scope of the Foundation's funding was widened to include all of the natural sciences as well as human and social sciences, with particular attention paid to advanced international research of a comprehensive nature that contributes to the scientific and technological advancement of humankind.

We further expanded our activities to include commendation activities and established the Blue Planet Prize to recognize outstanding contributions to finding solutions to global environmental problems, which are becoming a threat to humanity of crisis proportions.

## Programs

### 1. Research Grant Program

- a. Research Encouragement Grants
- b. Continuation Grants for Young Researchers
- c. Continuation Grants for Outstanding Projects
- d. Environmental Research: The Kondo Grant
- e. Overseas Research Grants (Thailand and Indonesia)
- f. Research Grant Presentation Ceremony and Seminar on Research Findings

\* Research Encouragement Grants, Continuation Grants for Young Researchers and Continuation Grants for Outstanding Projects

### 2. Commendation Program

- a. Blue Planet Prize, an international environmental award
  - Awards ceremony
  - Commemorative lectures
- b. Other environment-related activities
  - Annual survey: "Questionnaire on Environmental Problems and the Survival of Humankind"
  - Information about environment-related events, including Round Table Conference on Global Environment Problems and publications

### 3. Publications

- a. Annual Report & *af News*
- b. Related issues for Research Grant Program and Commendation Program

## Financial Information

Total Assets as of February 29, 2012 : ¥27.9 billion

Budget for Activities in Fiscal 2012 : ¥761 million

## History

- 1933 The Asahi Glass Co., Ltd., establishes the Asahi Foundation for Chemical Industry Promotion.
- 1934 The Asahi Foundation for Chemical Industry Promotion gains recognition as a nonprofit organization and increases its basic endowment to ¥1 million.  
The Foundation begins extending research grants to university researchers in the field of applied chemistry.
- 1961 The Foundation changes its name to the Asahi Glass Foundation for Industrial Technology.
- 1982 The Foundation begins research grant for Chulalongkorn University, Thailand.
- 1988 The Foundation begins research grant for Institut Teknologi Bandung, Indonesia.
- 1990 To support the expansion of its activities, the Foundation revises its funding program and changes its name to the Asahi Glass Foundation.  
The Foundation begins extending comprehensive research grants.
- 1991 The Foundation diversifies its natural sciences research grants to other fields of than applied chemistry.
- 1992 The first annual Blue Planet Prize awards ceremony is held.  
The first annual "Questionnaire on Environmental Problems and the Survival of Humankind" is conducted.  
The Foundation begins providing research grants to the fields of humanities and social sciences.  
The first seminar presenting findings from Foundation-granted research in Thailand is held at Chulalongkorn University.  
The Foundation begins issuing a semiannual newsletter, *afNews*, in Japanese and English.
- 1993 The first seminar presenting findings from Foundation-granted research is held.  
The first seminar on Foundation-assisted research in Indonesia is held at the Institut Teknologi Bandung.  
The foundation inaugurated Endowed Chair in Chemical Engineering at the University of Oklahoma.
- 1994 The Foundation publishes *Zaidan 60 Nen no Ayumi*, a history of its first 60 years, in Japanese.
- 1997 The Foundation issues *A Better Future for the Planet Earth*, a publication commemorating the fifth anniversary of the Blue Planet Prize.
- 2002 The Foundation commemorates the 10th anniversary of the Blue Planet Prize.  
Publication of *Toward the Future of the Blue Planet -10-Year History of the Blue Planet Prize*. 10th anniversary commemorative lectures.  
Publication of *A Better Future for the Planet Earth* Vol. II.
- 2006 The Foundation begins "Special Round Table Conference on Grobal Environment Problems."
- 2007 Publication of *A Better Future for the Planet Earth* Vol. III.
- 2008 The Foundation commences Continuation Grants for Young Researchers, Continuation Grants for Outstanding Projects and a Task-Oriented Research grants.
- 2009 Publication of *Our Vision: Conditions for Survival* (in Japanese and English).  
The Foundation becomes a Public Interest Incorporated Foundation.
- 2010 The Foundation begins new grant program "Environmental Research: The Kondo Grant".  
Publication of *Conditions for Survival : Toward a "Solar Energy-Based Society" Full of Vibrant Life* (in Japanese and English).
- 2011 Publication of *Conditions for Survival* (in Chinese & Korean).  
Symposium Conditions for Survival held.
- 2012 The Blue Planet Prize laureates jointly presented a paper titled Environment and Development Challenges: The Imperative to Act

---

## Directors and Councillors (As of July 1, 2012)

---

### *Directors*

#### Chairman

Tetsuji Tanaka Former Senior Executive Vice President, Asahi Glass Co., Ltd.

#### Senior Executive Director

Shunichi Samejima Former Head of Secretariat, the Asahi Glass Foundation;  
Former Chief Executive, F2 Chemicals; Former Director, Asahi Glass Co., Ltd.

#### Trustees

Yoshihiro Hayashi Professor, Tokyo University of Agriculture; Director General, Yamashina Institute for Ornithology  
Kazuhiko Ishimura President & CEO, Asahi Glass Co., Ltd.  
Kakutaro Kitashiro Senior Advisor, IBM Japan, Ltd.  
Yukiharu Kodama President, The Mechanical Social Systems Foundation;  
Former Administrative Vice-minister of International Trade and Industry  
Hideo Miyahara Former President, Osaka University;  
President, National Institute of Information and Communications Technology  
Terunobu Miyazaki Professor, Tohoku University  
Akio Morishima Special Research Advisor, Institute for Global Environmental Strategies;  
Professor Emeritus, Nagoya University  
Hachiro Nakanishi Auditor, Professor Emeritus, Tohoku University  
Ryoji Noyori President, RIKEN  
Kenjiro Omura Professor Emeritus, University of Tsukuba  
Shigeru Takahashi Professor, Hitotsubashi University  
Kenzo Tanaka Chairman, Board of Trustees, Fukuoka Gakuen;  
Professor Emeritus, former President, Kyushu University  
Hiroyuki Yoshikawa Director-General, Center for Research and Development Strategy, Japan Science and Technology Agency; Former President, Science Council of Japan; Former President, The University of Tokyo

#### Auditors

Shigemitsu Miki Senior Advisor, former Chairman, The Bank of Tokyo-Mitsubishi UFJ, Ltd.;  
Former President, The Mitsubishi Bank, Ltd.  
Masashi Sakamoto Former Statutory Auditor, Asahi Glass Co., Ltd.

### *Councillors*

Masuo Aizawa Executive Member, Council for Science and Technology Policy;  
Professor Emeritus, former President, Tokyo Institute of Technology  
Yohichi Gohshi Former President, National Institute for Environmental Studies;  
Professor Emeritus, The University of Tokyo  
Michiko Imai Director, Le Verseau Inc.  
Katsuhisa Kato Executive Vice President, Asahi Glass Co., Ltd.  
Ryozo Kato Commissioner, Nippon Professional Baseball Organization;  
Former Ambassador to the United States of America  
Hiroshi Komiyama Chairman, Mitsubishi Research Institute, Inc.; Former President, The University of Tokyo  
Minoru Makihara Senior Corporate Advisor, former Chairman, Mitsubishi Corporation  
Mamoru Mohri Executive Director, National Museum of Emerging Science and Innovation; Astronaut  
Keiko Nakamura Director General, JT Biohistory Research Hall  
Yuji Nishimi Senior Executive Vice President, Asahi Glass Co., Ltd.  
Hitoshi Osaki Special Advisor to the President, National Institutes for the Humanities;  
Former Commissioner for Cultural Affairs  
Niro Shimada Former Chief Justice, the Supreme Court of Japan  
Tsukasa Shimizu Chairman, Tokyo Kasei University; Professor Emeritus, former President, Waseda University  
Yuichi Shionoya Professor Emeritus, former President, Hitotsubashi University  
Junjiro Takahashi Advisor, Academyhills; Professor Emeritus, Keio University



---

## Nomination Form for the 2013 Blue Planet Prize

---

Please note the following

- **Please print clearly.**
- To facilitate our data processing, please respond in English.
- Please follow the instructions for each item when filling out the form.
- When telephone and/or facsimile numbers and E-mail address are unknown, leave the appropriate item blank.
- All nominations should be sent in by no later than October 15, 2012. We will accept all nominations postmarked by this date. However, to facilitate our data processing, please send the nomination forms as soon as possible, using the self-addressed free envelope provided.
- A nominator may not submit his or her own name for nomination.

<b>Type of Candidate</b> (Please circle your choice)	1. Individual	2. Group	3. Organization
Candidate's Name	Nationality		
Organization/Title			
Office Address			
Country	Tel:	Fax:	
	E-mail:		
Permanent Address			
Country	Tel:	Fax:	
	E-mail:		

- Notes : 1) If the candidate is a **group**, please indicate the name of the representative in the Candidate's Name blank. On a separate sheet, list the names of the other group members.
- 2) If the candidate is an **organization**, write the name of the organization in the Candidate's Name blank. In the Organization/Title blank, write the name of the representative and this person's title. In the Office Address blank, write the organization's address. There is no need to fill out the Permanent Address blank.

### Details of Contributions

If there is not enough space below, write no more than three typed pages and attach to this sheet.

#### Achievements Specific to Award

\* Please write in a simple format, such as "research in...." and "contributions for...."

#### Reasons for Nomination

\* Please respond in this order 1) Summary of above achievements 2) Amount of influence, success and originality 3) Others (the year of birth (year of establishment in case of organization), topics that demonstrate the qualities of the candidate and the significance of his or her achievements and contributions)

